

X  
X  
X  
X  
X  
X  
X  
X  
X  
X  
X  
X  
X

X  
X  
X  
X  
X  
X  
X  
X  
X  
X  
X  
X  
X



XXXXXXXXXXXXXXXXXXXXXXXXXXXX



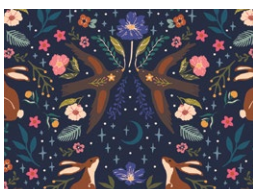


# Night Sky

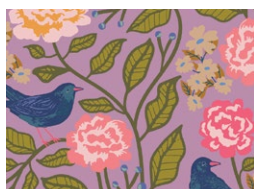
QUILT DESIGNED BY AGFstudio



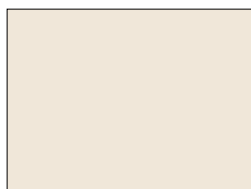
FABRICS DESIGNED BY MAUREEN CRACKNELL



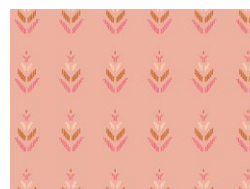
**Fabric A**  
STR88903  
MOONLIT FOREST DUSK



**Fabric B**  
STR88906  
BLACKBIRD CANOPY



**Fabric C**  
PE540  
COCONUT MILK



**Fabric D**  
STR88905  
FEATHERED FRILL



**Fabric E**  
**BACKING**  
STR88914  
BRAMBLEBLOOM BLUE



# Night Sky

FINISHED SIZE | 48½" x 48½"

## FABRIC REQUIREMENTS

Fabric **A** STR88903 ⅞ yd.

Fabric **B** STR88906 1⅙ yd.

Fabric **C** PE540 1½ yd.

Fabric **D** STR88905 ¾ yd.

### BACKING FABRIC

STR88914 3 yds (Suggested)

### BINDING FABRIC

Fabric **D** STR88905 ¾ yd. (Included)

## CUTTING DIRECTIONS

¼" seam allowances are included.  
WOF means width of fabric.

### Fabric A

- Cut 2 (two) 4½" x WOF strips.

#### Sub-cut

- 16 (sixteen) 4½" squares.

- Cut 8 (eight) 2½" x WOF strips.

#### Sub-cut

- 32 (thirty two) 2½" x 4½" rectangles.
- 32 (thirty two) 2½" squares.

### Fabric B

- Cut 3 (three) 4½" x WOF strips.

#### Sub-cut

- 20 (twenty) 4½" squares.

XXXXXXXXXXXXXXXXXXXXXXXXXXXXXXXXXXXX

- Cut 11 (eleven) 2½" x WOF strips.

#### Sub-cut

- 40 (forty) 2½" x 4½" rectangles.
- 40 (forty) 2½" squares.

### Fabric C

- Cut 20 (twenty) 2½" x WOF strips.

#### Sub-cut

- 72 (seventy two) 2½" x 4½" rectangles.
- 108 (one hundred and eight) 2½" squares.

### Fabric D

- Cut 5 (five) 2½" x WOF strips. **BINDING**

## CONSTRUCTION

Sew all rights sides together with ¼" seam allowance.

- Join one (1) 2½" x WOF strip from fabrics **B** and **C**, to create 1 (one) **BC** strip block. Make total of 3 (three) **BC** strip blocks.
- Then, cut 40 (forty) 2½" vertical strips from these blocks.
- Label these as Strip Set 1 (SS1).

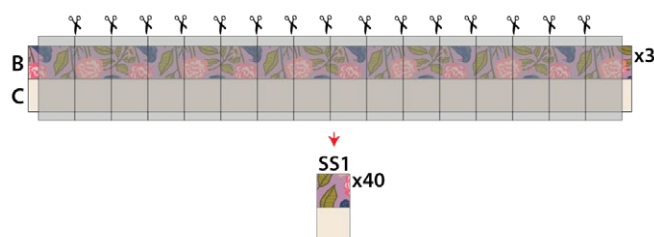


DIAGRAM 1

- Join 2 (two) Strip Set 1 (SS1). Note the direction of each strip set before sewing. See diagram 2 for reference. Label these as unit 1.
- Make a total of 20 (twenty).

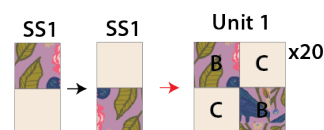


DIAGRAM 2

- Place 1 (one)  $2\frac{1}{2}$ " square from fabric **C** to the bottom left corner of 1 (one)  $4\frac{1}{2}$ " square from fabric **B**.
- Sew diagonally from the top left to the bottom right corner of fabric **C** square.
- Trim  $\frac{1}{4}$ " away from the seam, open outward and lightly press. Label these as Unit 2. Make a total of 20 (twenty)

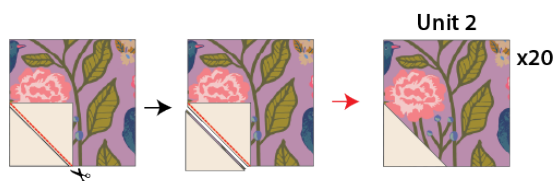


DIAGRAM 3

- Place 1 (one)  $2\frac{1}{2}$ " square from fabric **B** to the right edge of 1 (one)  $2\frac{1}{2}$ " x  $4\frac{1}{2}$ " rectangle from fabric **C**.
- Sew diagonally from the top right to the bottom left corner of fabric **B** square.
- Trim  $\frac{1}{4}$ " away from the seam, open outward and lightly press. Label these as Unit 3. Make a total of 20 (twenty)



DIAGRAM 4

- Place 1 (one)  $2\frac{1}{2}$ " square from fabric **B** to the left edge of 1 (one)  $2\frac{1}{2}$ " x  $4\frac{1}{2}$ " rectangle from fabric **C**.
- Sew diagonally from the top left to the bottom right corner of fabric **B** square.
- Trim  $\frac{1}{4}$ " away from the seam, open outward and lightly press. Label these as Unit 4. Make a total of 20 (twenty)



DIAGRAM 5

- Place 1 (one)  $2\frac{1}{2}$ " square from fabric **C** to the left edge of 1 (one)  $2\frac{1}{2}$ " x  $4\frac{1}{2}$ " rectangle from fabric **B**.
- Sew diagonally from the top right to the bottom left corner of fabric **C** square.
- Trim  $\frac{1}{4}$ " away from the seam, open outward and lightly press. Label these as Unit 5. Make a total of 20 (twenty)



DIAGRAM 6

- Place 1 (one)  $2\frac{1}{2}$ " square from fabric **C** to the right edge of 1 (one)  $2\frac{1}{2}$ " x  $4\frac{1}{2}$ " rectangle from fabric **B**.
- Sew diagonally from the top left to the bottom right corner of fabric **C** square.
- Trim  $\frac{1}{4}$ " away from the seam, open outward and lightly press. Label these as Unit 6. Make a total of 20 (twenty)

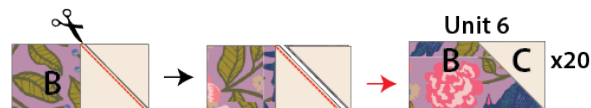


DIAGRAM 7

- Join 1 (one) unit 5 and 4 as shown on diagram below. Label these as unit 7. Make a total of 20 (twenty)

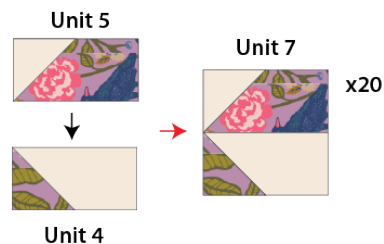


DIAGRAM 8





- Place 1 (one) 2½" square from fabric **C** to the bottom left corner of 1 (one) 4½" square from fabric **A**.
- Sew diagonally from the top left to the bottom right corner of fabric **C** square.
- Trim ¼" away from the seam, open outward and lightly press. Label these as Unit 10. Make a total of 16 (sixteen).



DIAGRAM 14

- Place 1 (one) 2½" square from fabric **A** to the right edge of 1 (one) 2½" x 4½" rectangle from fabric **C**.
- Sew diagonally from the top right to the bottom left corner of fabric **A** square.
- Trim ¼" away from the seam, open outward and lightly press. Label these as Unit 11. Make a total of 16 (sixteen).



DIAGRAM 15

- Place 1 (one) 2½" square from fabric **A** to the left edge of 1 (one) 2½" x 4½" rectangle from fabric **C**.
- Sew diagonally from the top left to the bottom right corner of fabric **A** square.
- Trim ¼" away from the seam, open outward and lightly press. Label these as Unit 12. Make a total of 16 (sixteen).



DIAGRAM 16

- Place 1 (one) 2½" square from fabric **C** to the left edge of 1 (one) 2½" x 4½" rectangle from fabric **A**.
- Sew diagonally from the top right to the bottom left corner of fabric **C** square.
- Trim ¼" away from the seam, open outward and lightly press. Label these as Unit 13. Make a total of 16 (sixteen).



DIAGRAM 17

- Place 1 (one)  $2\frac{1}{2}$ " square from fabric **C** to the right edge of 1 (one)  $2\frac{1}{2}$ " x  $4\frac{1}{2}$ " rectangle from fabric **A**.
- Sew diagonally from the top left to the bottom right corner of fabric **C** square.
- Trim  $\frac{1}{4}$ " away from the seam, open outward and lightly press. Label these as Unit 14. Make a total of 16 (sixteen).



DIAGRAM 18

- Join 1 (one) unit 13 and 12 as shown on diagram below. Label these as unit 15. Make a total of 16 (sixteen).



DIAGRAM 19

- Join 1 (one) unit 11 and 14 as shown on diagram below. Label these as unit 16. Make a total of 16 (sixteen).

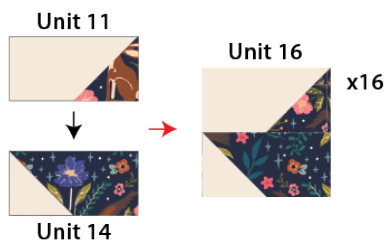


DIAGRAM 20

## Block 2

- Arrange 4 (four) units 9, 10, 15 and 16 into 4 rows of four units each and sew them in rows.
- Then, sew all 4 (four) rows together.
- Label these as **Block 2** and make a total of 4 (four).



DIAGRAM 21

## Block 2



DIAGRAM 22

- Arrange all blocks into 3 rows of 3 blocks each and sew them in rows.
- Then, sew rows together.

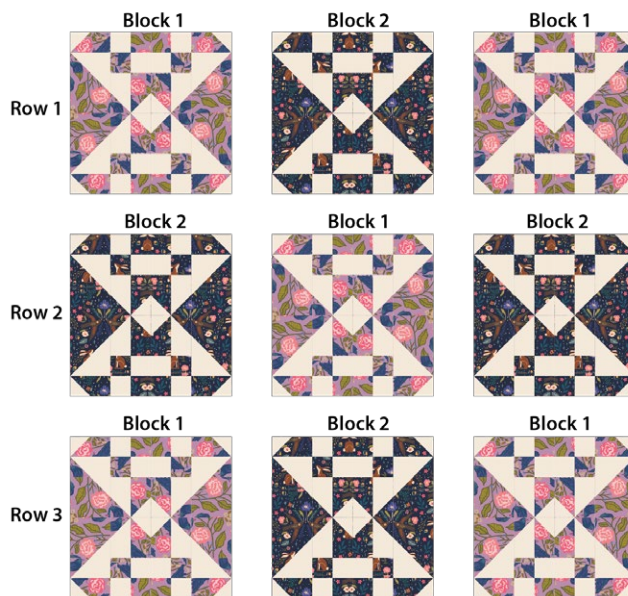


DIAGRAM 23



## QUILT TOP

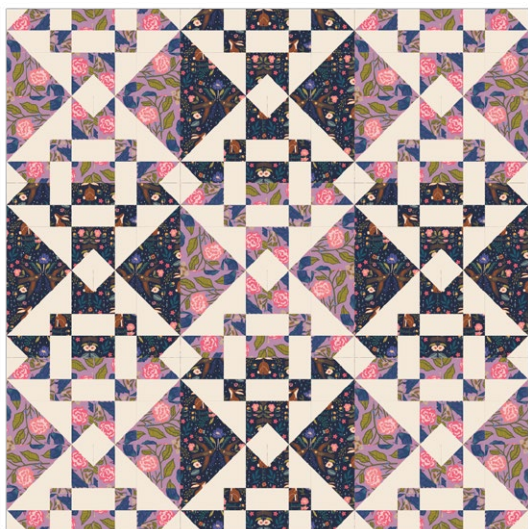


DIAGRAM 24

## QUILT ASSEMBLY

*Sew rights sides together.*

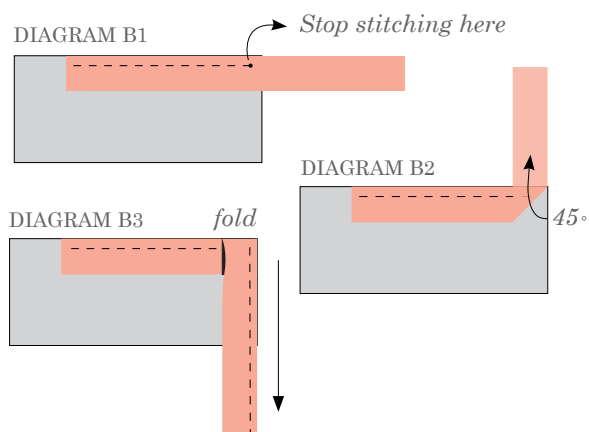
- Place BACKING FABRIC on a large surface wrong side up. Stretch it with masking tape against that surface.
- Place BATTING on top of backing fabric.
- Place TOP on top of the batting with right side facing up. Smooth away wrinkles using your hands.
- Pin all layers together and baste with basting thread, using long stitches. You can also use safety pins to join the layers.
- Machine or hand quilt starting at the center and working towards the corners. Remember that quilting motifs are a matter of personal preference. Have fun choosing yours!
- After you finished, trim excess of any fabric or batting, squaring the quilt to proceed to bind it.

## BINDING

*Sew rights sides together.*

- Cut enough strips  $2\frac{1}{2}$ " wide by the width of the fabric **D** to make a final strip 204" long. Start sewing the binding strip in the middle of one of the sides of the quilt, placing the strip right side down and leaving an approximated 5" tail. Sew with  $\frac{1}{4}$ " seam allowance (using straight stitch), aligning the strip's raw edge with the quilt top's raw edge.

- Stop stitching  $\frac{1}{4}$ " before the edge of the quilt (DIAGRAM B 1). Clip the threads. Remove the quilt from under the machine presser foot. Fold the strip in a motion of  $45^\circ$  and upward, pressing with your fingers (DIAGRAM B2). Hold this fold with your finger, bring the strip down in line with the next edge, making a horizontal fold that aligns with the top edge of the quilt (DIAGRAM B3). Start sewing at  $\frac{1}{4}$ " of the border, stitching all the layers. Do the same in the four corners of the quilt.
- Stop stitching before you reach the last 5 or 6 inches. Cut the threads and remove the quilt from under the machine presser foot. Lay the loose ends of the binding flat along the quilt edge, folding the ends back on themselves where they meet. Press them together to form a crease. Using this crease as the stitching line, sew the two open ends of the binding with right sides together (you can help yourself marking with a pencil if the crease is difficult to see).
- Trim seam to  $\frac{1}{4}$ " and press open. Complete the sewing. Turn binding to back of the quilt, turn raw edge inside and stitch by hand using blind stitch.
- If you are using our 2.5 edition (binding fabric), click or scan this QR code to see a tutorial on how to use this specialty fabric.





XXXXXXXXXXXXXXXXXXXXXXXXXXXX

*Congratulations  
& enjoy*

XXXXXXXXXXXXXXXXXXXXXXXXXXXX



[artgalleryfabrics.com](http://artgalleryfabrics.com)

NOTE: While all possible care has been taken to ensure the accuracy of this pattern, We are not responsible for printing errors or the way in which individual work varies.

Please read instructions carefully before starting the construction of this quilt. If desired, wash and iron your fabrics before starting to cut.

© 2025 Courtesy of Art Gallery Quilts LLC. All Rights Reserved.